

MONTHLY MEMBERSHIP PROGRESS REPORT

LOCATION ONTARIO

District A 2

Results as of: 3/31/2021

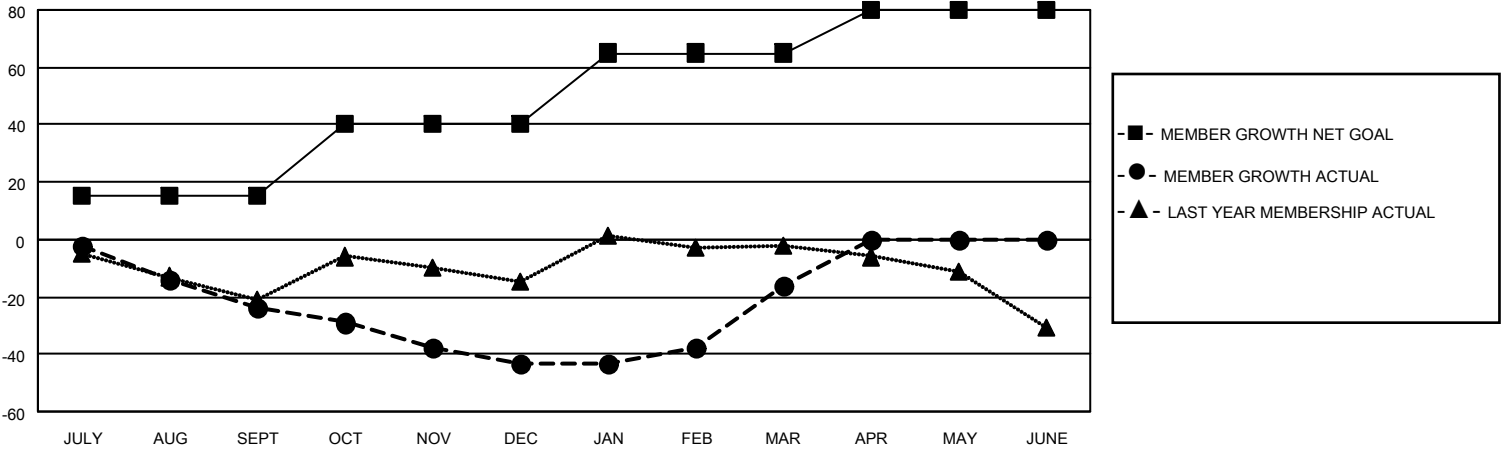
Clubs			
RESULTS FOR 2020-2021			
QUARTER	NEW CLUB GOAL	NEW CLUBS	DROPPED CLUBS
JULY/AUG/SEPT	0	0	0
OCT/NOV/DEC	0	0	0
JAN/FEB/MAR	1	0	0
APR/MAY/JUNE	0	0	0

Members			
RESULTS FOR 2020-2021			
QUARTER	MEMBER GROWTH NET GOAL	MEMBER GROWTH ACTUAL	DROPPED MEMBERS ACTUAL (including transfers)
JULY/AUG/SEPT	15	10	31
OCT/NOV/DEC	25	24	39
JAN/FEB/MAR	25	36	8
APR/MAY/JUNE	15	0	0

GOALS AND ACTUAL NEW CLUBS CUMULATIVE



GOALS AND ACTUAL MEMBERS CUMULATIVE



DROPPED CLUBS: 0	14 CLUBS OF 40 ADDED 1 OR MORE NEW MEMBERS	<u>GENDER DISTRIBUTION</u>
<u>DROPPED MEMBERS</u>	CLICK HERE FOR CUMULATIVE MEMBERSHIP DATA	MALE 1,038 (82.19%)
DECEASED 30		FEMALE 225 (17.81%)
CLUB CANCELLED 0		TOTAL FAMILY UNIT MEMBERS 146
OTHER 48		FAMILY MEMBERS PAYING HALF DUES 74
TOTAL 78		